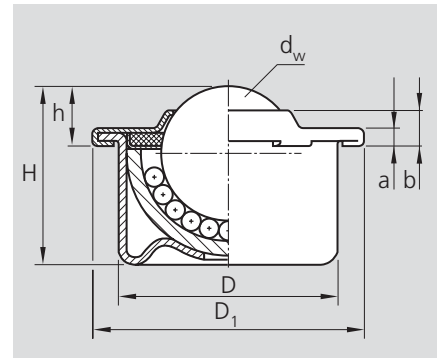
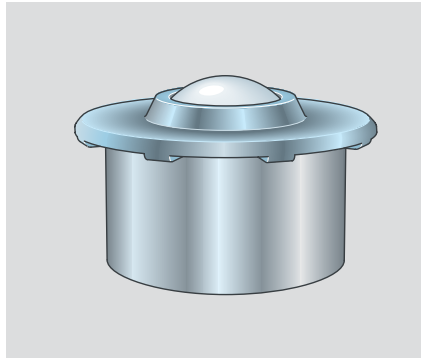


Ball Transfer Units Tables

Ball Transfer Units with Sheet Steel Housing

0530 – ...

- for general applications



Part numbers	Execution	Dimensions [mm]							Load capacity C [N]	Mass [kg]
		d _w	D	D ₁	h	H	a	b		
0530-108-10 ^{1)*}	Cover and housing galvanized	8	12.6 ± 0.055	17	4.8 ± 0.15	11.2	1.8	3.2	100	0.007
0530-112-10 ^{1)*}		12	18.0 ± 0.055	23	7.4 ± 0.15	15.5	2.0	4.3	250	0.018
0530-115-10 ¹⁾		15	24.0 ± 0.065	31	9.5 ± 0.20	21.5	2.5	6.1	500	0.038
0530-122-10 ²⁾		22	36.0 ± 0.080	45	9.8 ± 0.20	29.5	2.9	5.7	1300	0.132
0530-130-10 ²⁾		30	45.0 ± 0.080	55	13.8 ± 0.30	37.5	3.7	7.9	2500	0.265
0530-145-10 ²⁾	45	62.0 ± 0.095	75	19.0 ± 0.40	53.7	4.2	10.3	6000	0.720	
0530-208-10 ^{1)*}	All parts galvanized, balls made from corrosion-resistant steel	8	12.6 ± 0.055	17	4.8 ± 0.15	11.2	1.8	3.2	70	0.007
0530-212-10 ^{1)*}		12	18.0 ± 0.055	23	7.4 ± 0.15	15.5	2.0	4.3	180	0.018
0530-215-10 ¹⁾		15	24.0 ± 0.065	31	9.5 ± 0.20	21.5	2.5	6.1	370	0.038
0530-222-10 ²⁾		22	36.0 ± 0.080	45	9.8 ± 0.20	29.5	2.9	5.7	970	0.132
0530-230-10 ²⁾		30	45.0 ± 0.080	55	13.8 ± 0.30	37.5	3.7	7.9	1900	0.265
0530-245-10 ²⁾	45	62.0 ± 0.095	75	19.0 ± 0.40	53.7	4.2	10.3	4500	0.720	
0530-608-00 ^{1)*}	All parts made from corrosion-resistant steel	8	12.6 ± 0.055	17	4.8 ± 0.15	11.2	1.8	3.2	70	0.007
0530-612-00 ^{1)*}		12	18.0 ± 0.055	23	7.4 ± 0.15	15.5	2.0	4.3	180	0.018
0530-615-00 ¹⁾		15	24.0 ± 0.065	31	9.5 ± 0.20	21.5	2.5	6.1	370	0.038
0530-622-00 ²⁾		22	36.0 ± 0.080	45	9.8 ± 0.20	29.5	2.9	5.7	970	0.132
0530-630-00 ²⁾		30	45.0 ± 0.080	55	13.8 ± 0.30	37.5	3.7	7.9	1900	0.265

Ball Transfer Units with Plastic Load Ball 0531 – ...

- suitable for conveying sensitive articles

Part numbers	Execution	Dimensions [mm]							Load capacity ⁴⁾ C [N]	Mass [kg]
		d _w	D	D ₁	h	H	a	b		
0531-108-10 ^{1)*}	Cover and housing galvanized	8	12.6 ± 0.055	17	4.8 ± 0.15	11.2	1.8	3.2	10	0.005
0531-112-10 ^{1)*}		12	18.0 ± 0.055	23	7.4 ± 0.15	15.5	2.0	4.3	35	0.012
0531-115-10 ¹⁾		15	24.0 ± 0.065	31	9.5 ± 0.20	21.5	2.5	6.1	70	0.024
0531-122-10 ³⁾		22	36.0 ± 0.080	45	9.6 ± 0.20	29.3	2.9	5.7	100	0.093
0531-130-10 ³⁾		30	45.0 ± 0.080	55	13.6 ± 0.30	37.3	3.7	7.9	150	0.168
0531-208-10 ^{1)*}	All parts galvanized, load balls made from corrosion-resistant steel	8	12.6 ± 0.055	17	4.8 ± 0.15	11.2	1.8	3.2	10	0.005
0531-212-10 ^{1)*}		12	18.0 ± 0.055	23	7.4 ± 0.15	15.5	2.0	4.3	35	0.012
0531-215-10 ¹⁾		15	24.0 ± 0.065	31	9.5 ± 0.20	21.5	2.5	6.1	70	0.024
0531-222-10 ³⁾		22	36.0 ± 0.080	45	9.6 ± 0.20	29.3	2.9	5.7	100	0.093
0531-230-10 ³⁾		30	45.0 ± 0.080	55	13.6 ± 0.30	37.3	3.7	7.9	150	0.168
0531-608-00 ^{1)*}	All parts made from corrosion-resistant steel	8	12.6 ± 0.055	17	4.8 ± 0.15	11.2	1.8	3.2	10	0.005
0531-612-00 ^{1)*}		12	18.0 ± 0.055	23	7.4 ± 0.15	15.5	2.0	4.3	35	0.012
0531-615-00 ¹⁾		15	24.0 ± 0.065	31	9.5 ± 0.20	21.5	2.5	6.1	70	0.024
0531-622-00 ³⁾		22	36.0 ± 0.080	45	9.6 ± 0.20	29.3	2.9	5.7	100	0.093
0531-630-00 ³⁾		30	45.0 ± 0.080	55	13.6 ± 0.30	37.3	3.7	7.9	150	0.168

¹⁾ Without felt seal ²⁾ Bottom holes for dirt discharge against surcharge ³⁾ Dry felt seal ⁴⁾ At 20 °C ^{*} Available as of October 2003